

# Point-of-Care Interactive Decision Support Tool Demonstrates Discordance Between Healthcare Practitioner Approaches and AASLD Guideline Recommendations in the Management of HBV Infection

Tiffany Hensley-McBain, PhD<sup>1</sup>; Zachary Schwartz, MS<sup>1</sup>; Jennifer Blanchette, PhD<sup>1</sup>; Jenny Schulz, PhD<sup>1</sup>; Edward King, MA<sup>1</sup>; Paul Y. Kwo, MD<sup>2</sup>

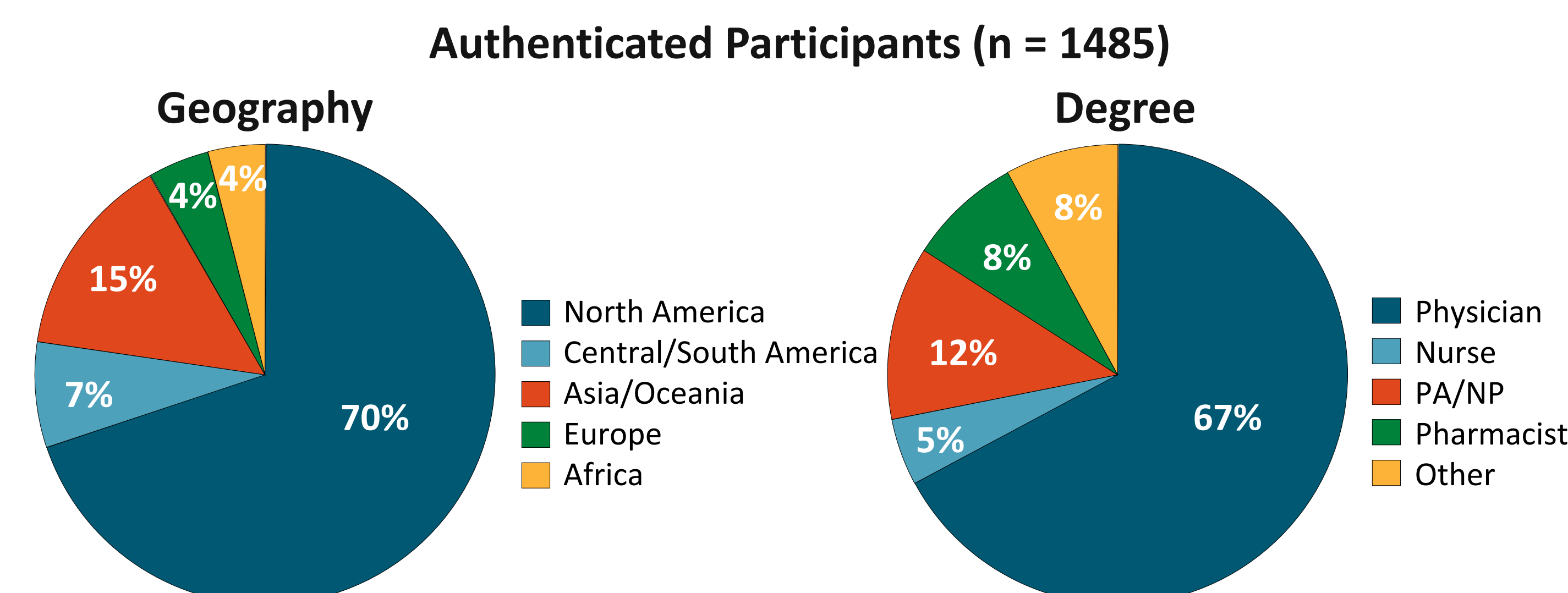
<sup>1</sup>Clinical Care Options, LLC. <sup>2</sup>Stanford University School of Medicine.

## 1. Background

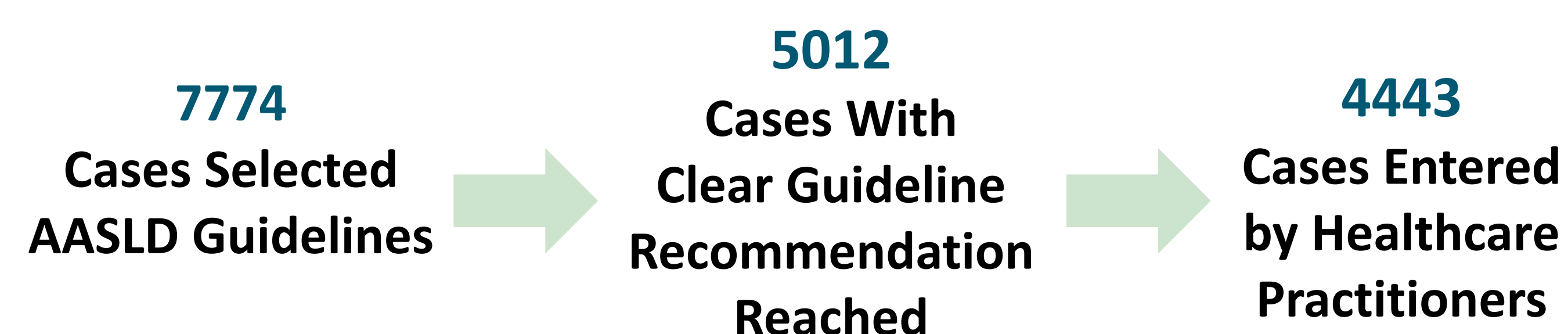
The AASLD HBV management guidelines were updated in 2018 to include new recommendations. Patient variables that inform HBV treatment candidacy and treatment selection are complex and interconnected. To aid healthcare practitioners (HCPs) in aligning management decisions with practice guidance, we developed a Web- and app-based decision support tool, “Hep B Consult.”

## 2. Tool Users

- From March 2019 through August 2020, **N = 18,176** cases were entered into the tool, of which **n = 7774** specified AASLD guidelines
  - n = 6289 cases via the app (anonymous)
  - n = 1485 cases via the CCO site (authenticated)



## 3. Cases Entered

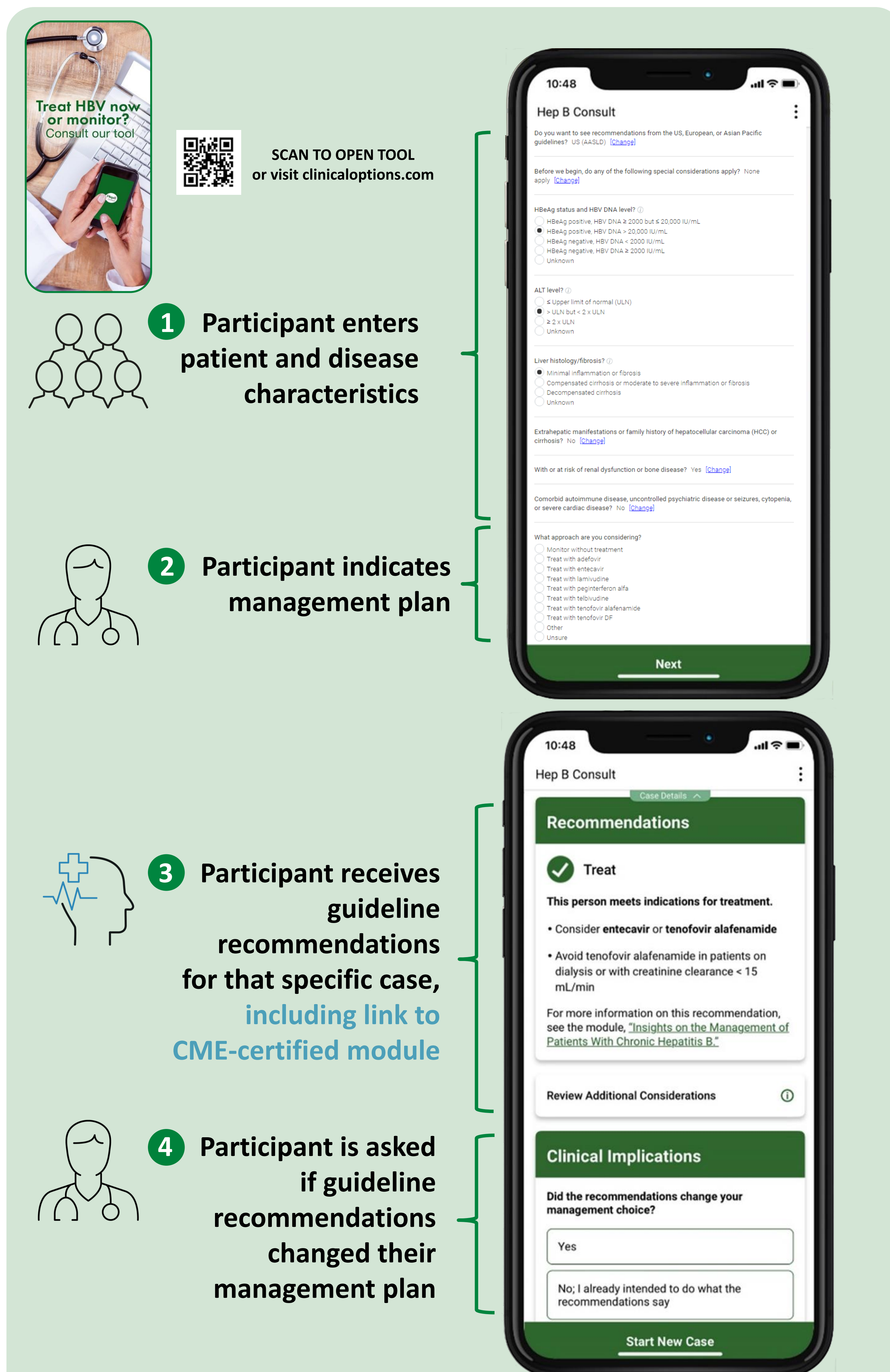


- Of 1743 cases where participants specified:
- 58% were real patients
  - 42% were hypothetical cases

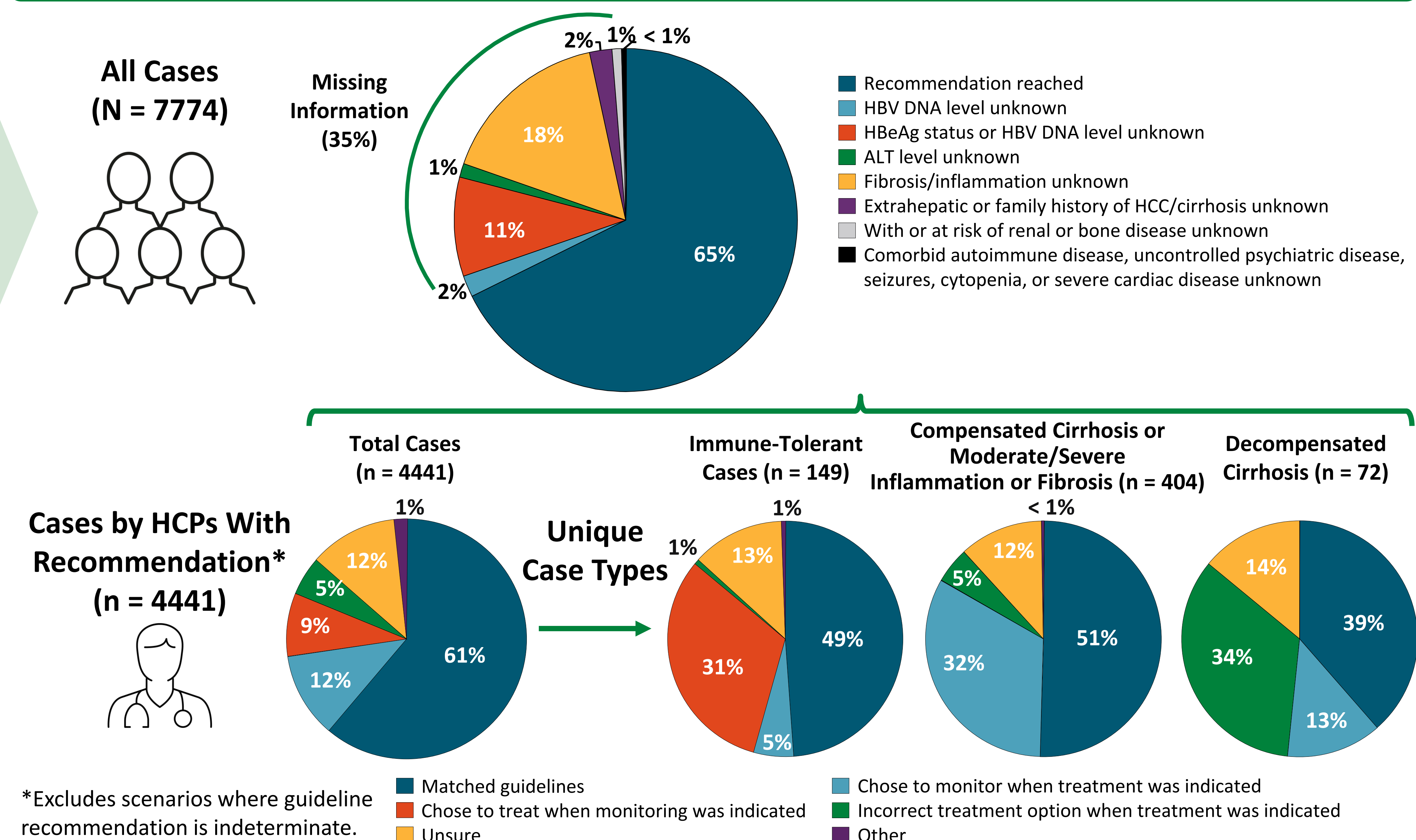
Of 3004 cases where HBeAg status and HBV DNA level were known:

HBeAg Positive	HBeAg Negative
19% HBV DNA ≥ 2000 but ≤ 20,000	30% HBV DNA < 2000
18% HBV DNA > 20,000	33% HBV DNA ≥ 2000

## 4. Online Decision Support Tool Provides Patient-Specific Recommendations

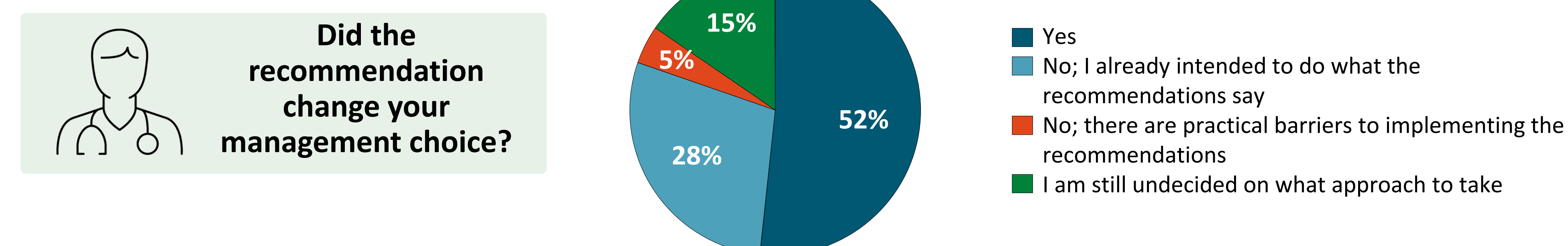


## 5. Case Outcome and Intended Management Approach



## 6. Posteducation Impact

Subset of Clinician Cases Where Baseline Plan Differed From Guidelines and Clinician Identified Future Plan (n = 676)



## 7. Conclusions

- This online decision support tool showed users selected “unknown” for a variable necessary to reach a guideline recommendation for 35.5% of cases → the information most often missing was the level of fibrosis/inflammation
- Clinicians’ initial HBV management plans of whether to treat and what to treat with differed from guidelines for 39% of case scenarios → certain types of cases demonstrated higher discordance
- Of cases in which the HCPs’ intentions were inconsistent with guidelines, 52.1% indicated that they planned to change their approach after being provided the recommendation by the tool

**Acknowledgements:** This research is based on CME activities supported by an independent educational grant from Gilead Sciences.  
**Disclosures:** \*None. <sup>2</sup>Consulting fees from Gilead Sciences and Janssen; funds for research support from Gilead Sciences; speaker bureaus for Abbott, AbbVie, Bristol-Myers Squibb, Echosens, Furui, Gilead Sciences, Janssen, and Roche.