

Impact of Multimodal Independent Medical Education on Improving Outcomes and Reducing Disparities in Systemic Lupus Erythematosus and Lupus Nephritis

Lisa Handley, PharmD
Kimberly Lovin Nealy, PharmD, BCPS, CDCES, CPP, FNCAP
Sarah A. Nisly, PharmD, MEd, BCPS, FCCP

Background

- **SLE disproportionately affects women of color**, resulting in higher disease severity and mortality rates and worse health-related quality of life
- Greater HCP competence about treating SLE and LN with new and emerging agents and addressing healthcare disparities is needed to optimize outcomes

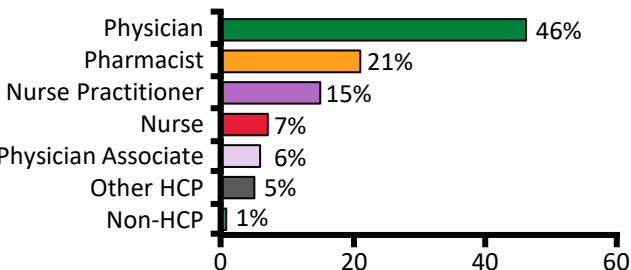
Aim

- To determine the **educational impact** and **remaining practice gaps** among HCPs following education on improving disease and patient outcomes and reducing disparities in patients with SLE and LN

Methods

- CCO released an online educational program on SLE and LN in March 2022 featuring 3 live webinars, 2 expert podcasts, 1 on-demand webcast, and a downloadable slideset
- **Key educational gaps** were identified using **baseline** and **postactivity questions**

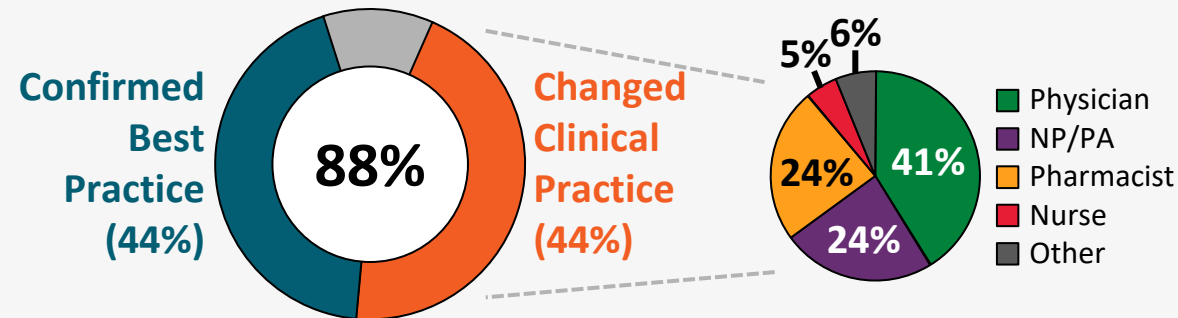
Multidisciplinary Learners



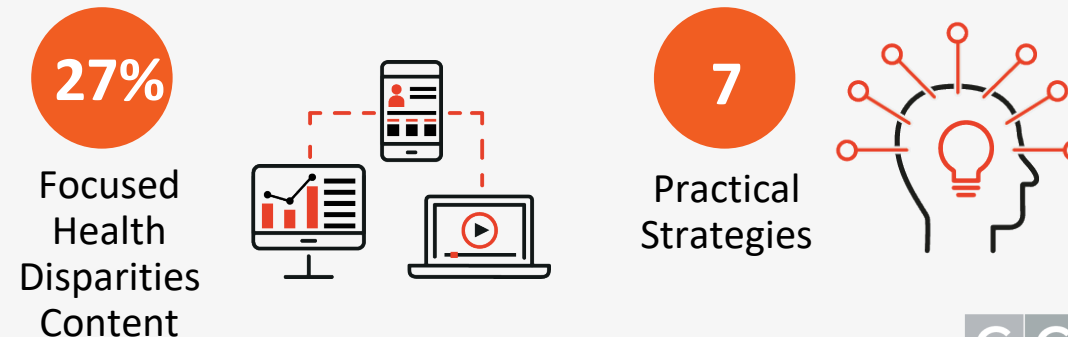
HCP, healthcare professional; LN, lupus nephritis; NP, nurse practitioner; PA, physician associate; SLE, systemic lupus erythematosus.

Improving Care and Reducing Health Disparities in SLE and LN Through Multimodal Education

Improving Care



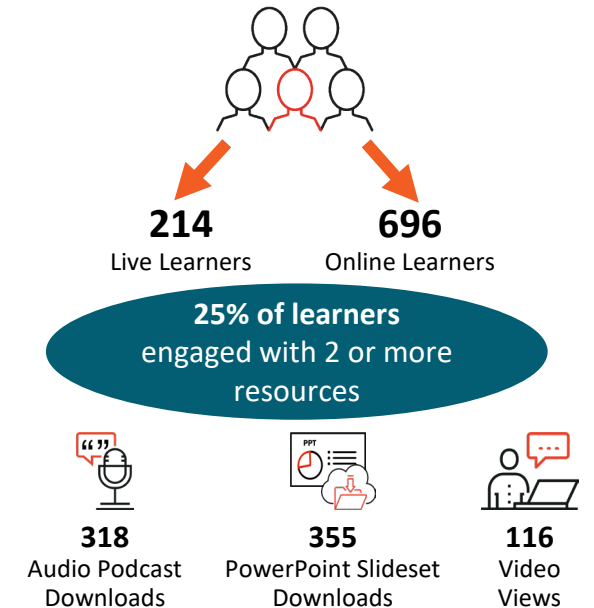
Practical Strategies for Reducing Healthcare Disparities



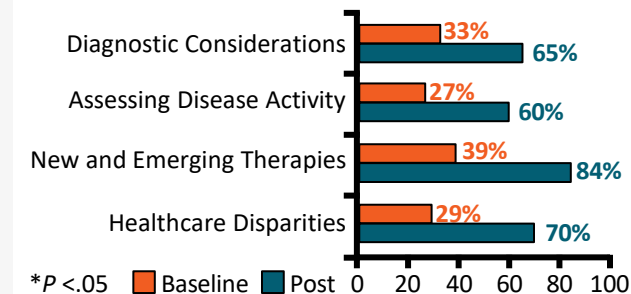
This educational activity is supported by an educational grant from GlaxoSmithKline.



Engagement



Outcomes*



Impact on Practice

Estimated Number of Patients Who Will Benefit

6304