

A Point-of-Care Decision Support Tool Reveals Variance Between Clinicians and Experts in Selecting Among GLP-1 RAs in Type 2 Diabetes

Zachary Schwartz, MSC, ELS¹; Kiran Mir-Hudegons, PhD¹; Anne Roc, PhD¹; Robert S. Zimmerman, MD²; Anne Peters, MD³

¹Clinical Care Options, LLC. ²Cleveland Clinic ³Univesirty of Southern California

1. Background

To help clinicians understand GLP-1 receptor agonist (GLP-1 RA) therapies and their novel characteristics and to help them choose among GLP-1 RAs for patients with T2D, we developed an online tool where choice of treatment among GLP-1 RAs is guided by a panel of experts.

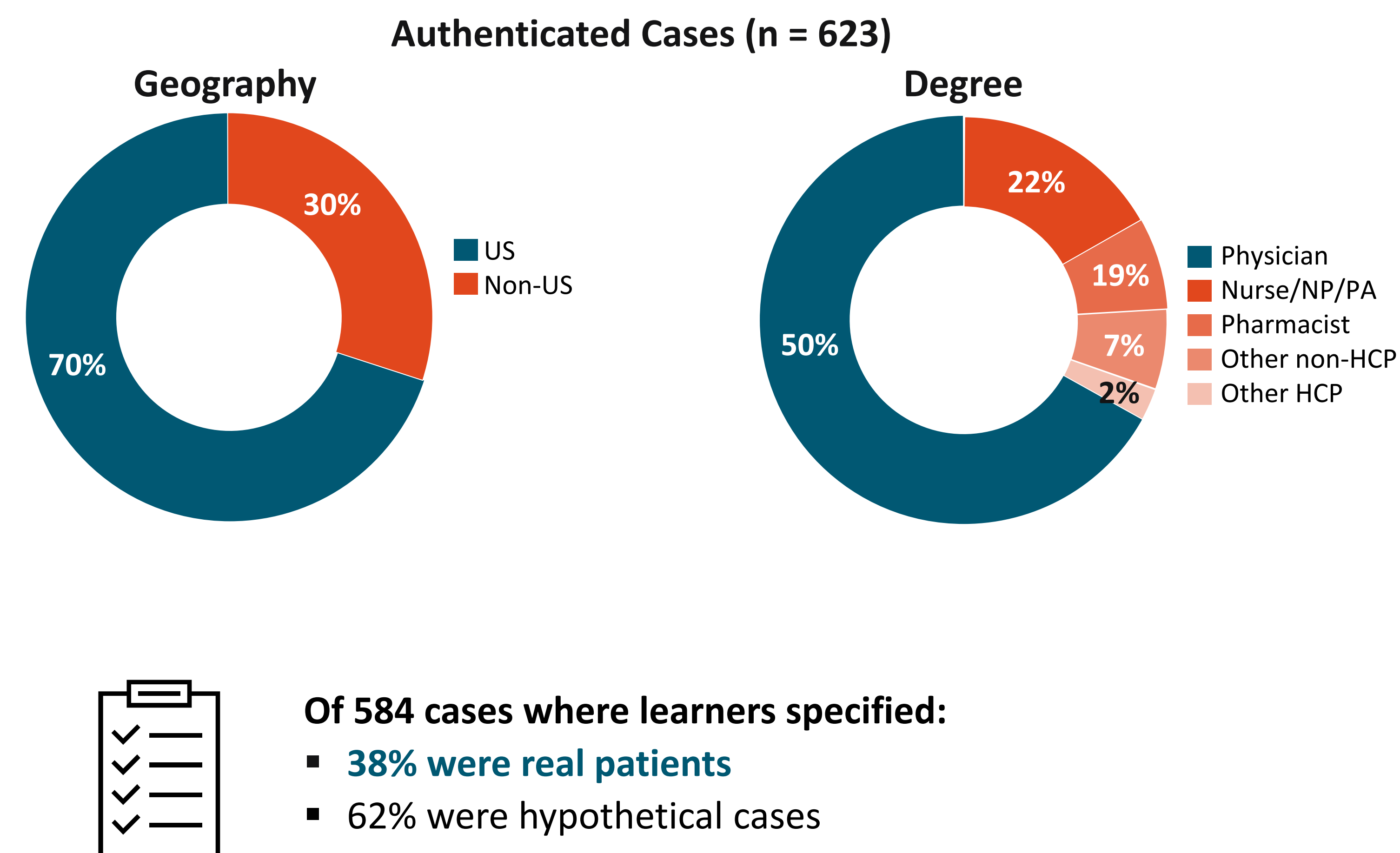
The goal was to provide real-time recommendations based on patient-specific characteristics and to identify variances between the treatment strategies of experts and community clinicians.

Five diabetes experts provided treatment recommendations for a combination of patient variables totaling 48 possible scenarios based on:

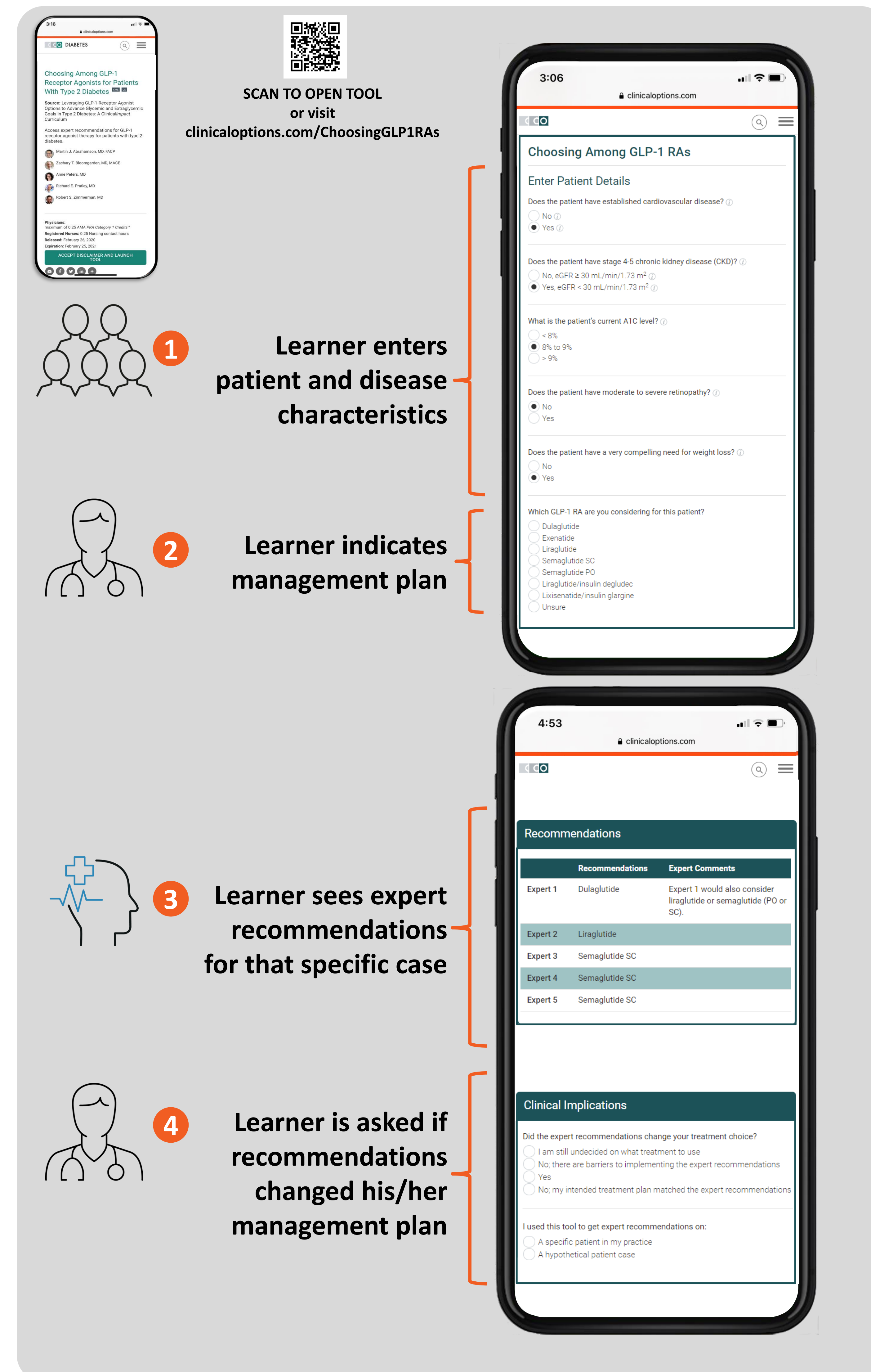
- A1C level
- CVD
- CKD
- Need for weight loss
- Retinopathy

2. Cases

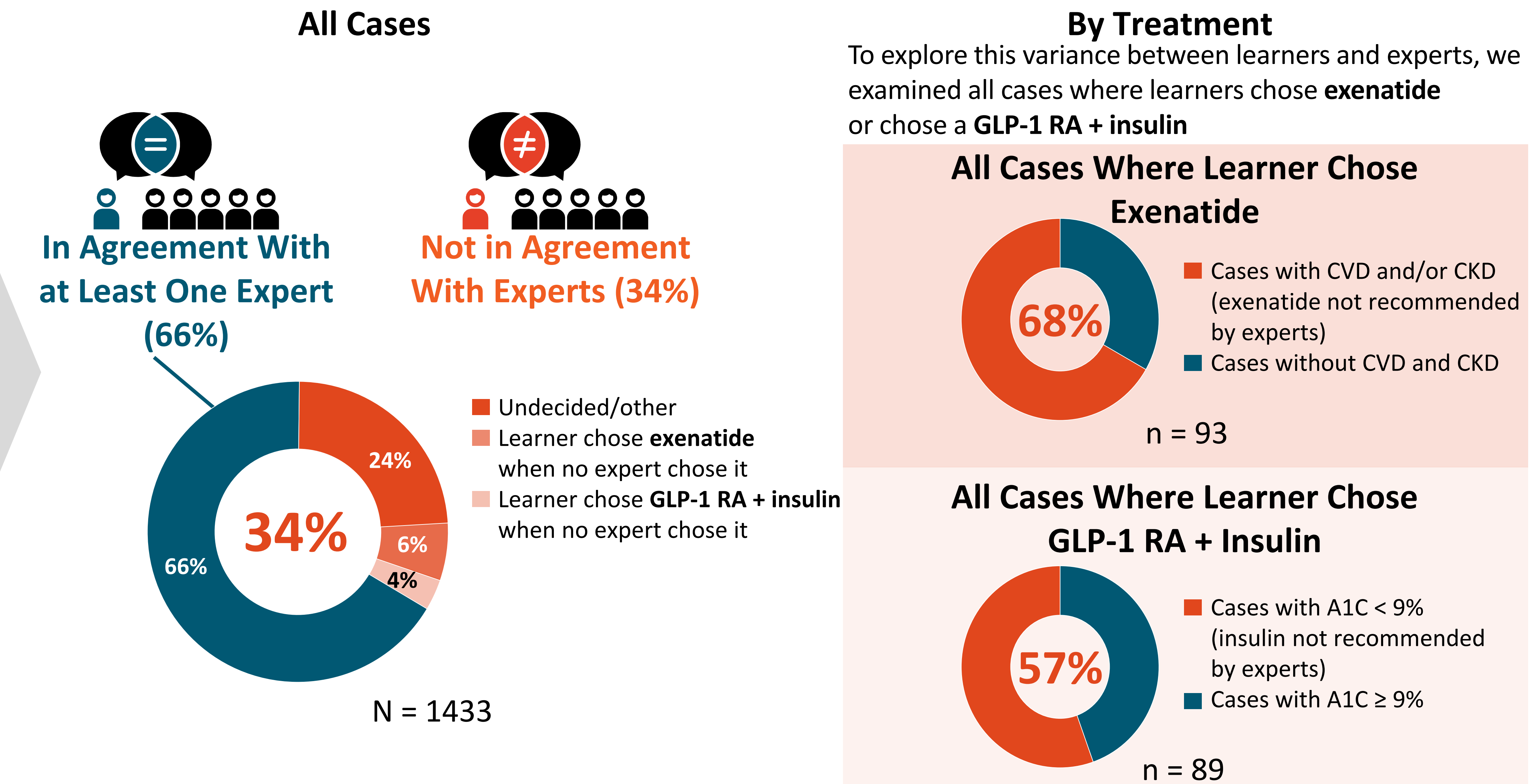
- From February through October 2020, **983 learners** entered **N = 1433** cases into the tool
 - n = 365 cases via the app (anonymous)
 - n = 623 cases via the CCO site (authenticated)



3. Online Decision Support Tool Provides Patient-Specific Recommendations



4. Learners' Initial Choice of GLP-1 RA



5. Posteducation Impact

Subset of Learner Cases Where Baseline Plan Differed From Experts and Learner Identified Future Plan



6. Conclusions

- Learners' initial choice of GLP-1 RA **differed from experts for 34% of case scenarios**, highlighted continuing gaps in clinicians' ability to select among GLP-1 RAs for T2D
- These cases of variance included:
 - Use of **exenatide** in patients with **CVD and/or CKD**
 - Use of GLP-1 RA + **insulin** in patients with **A1C < 9%**
- Of cases in which the learners' intentions differed from expert recommendations, **52% indicated that they planned to change their approach** after being provided the recommendation by the tool, suggesting the tool's use can help optimize care of patients with T2D